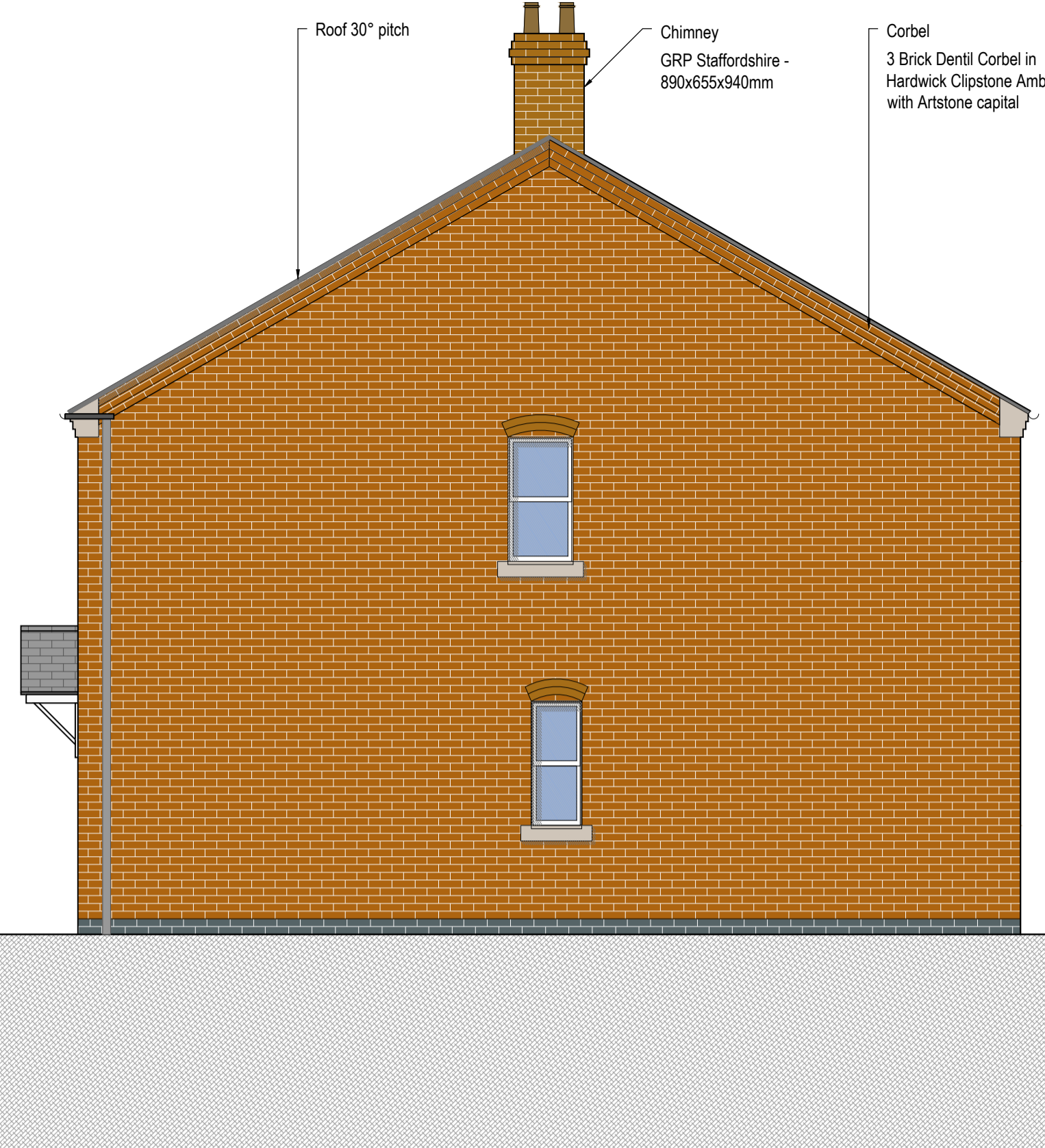


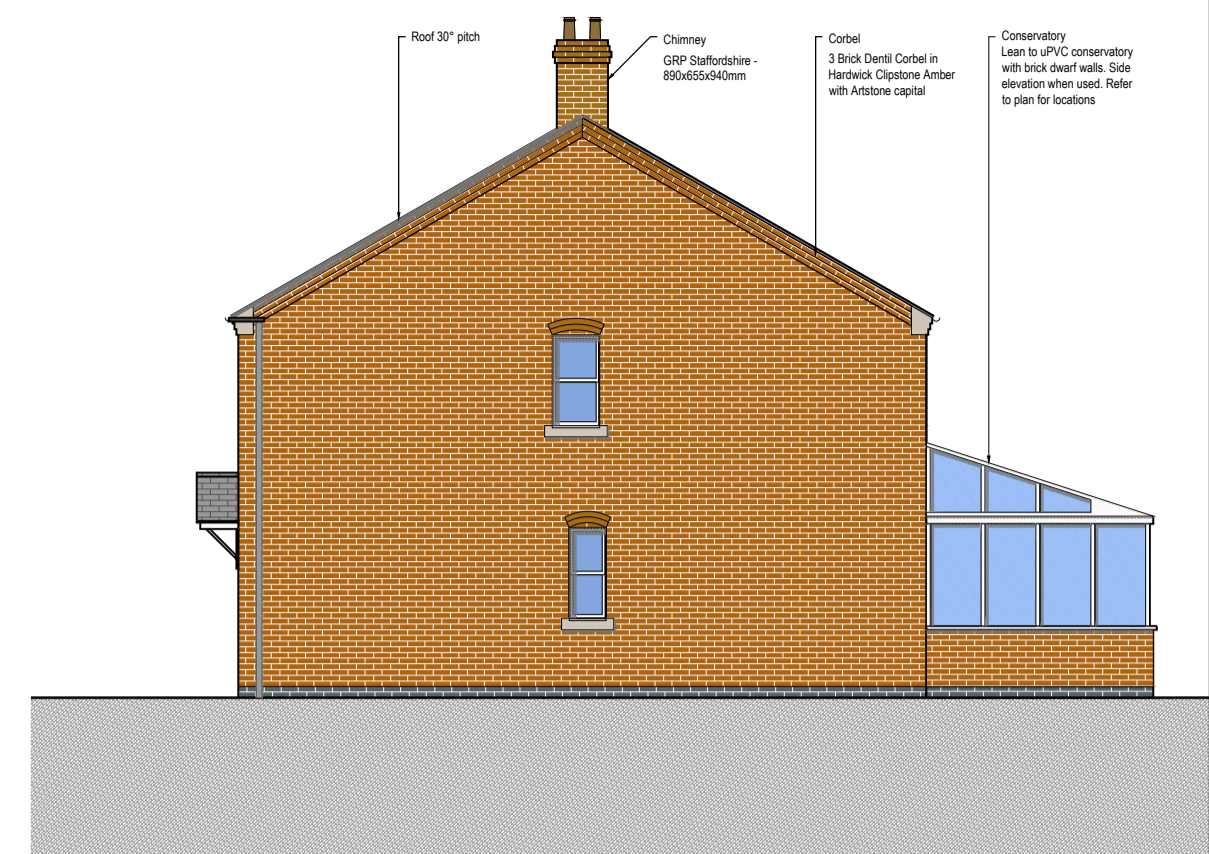
P/2014/01663
Received 06/01/15



A Front Elevation



B Side 1 Elevation



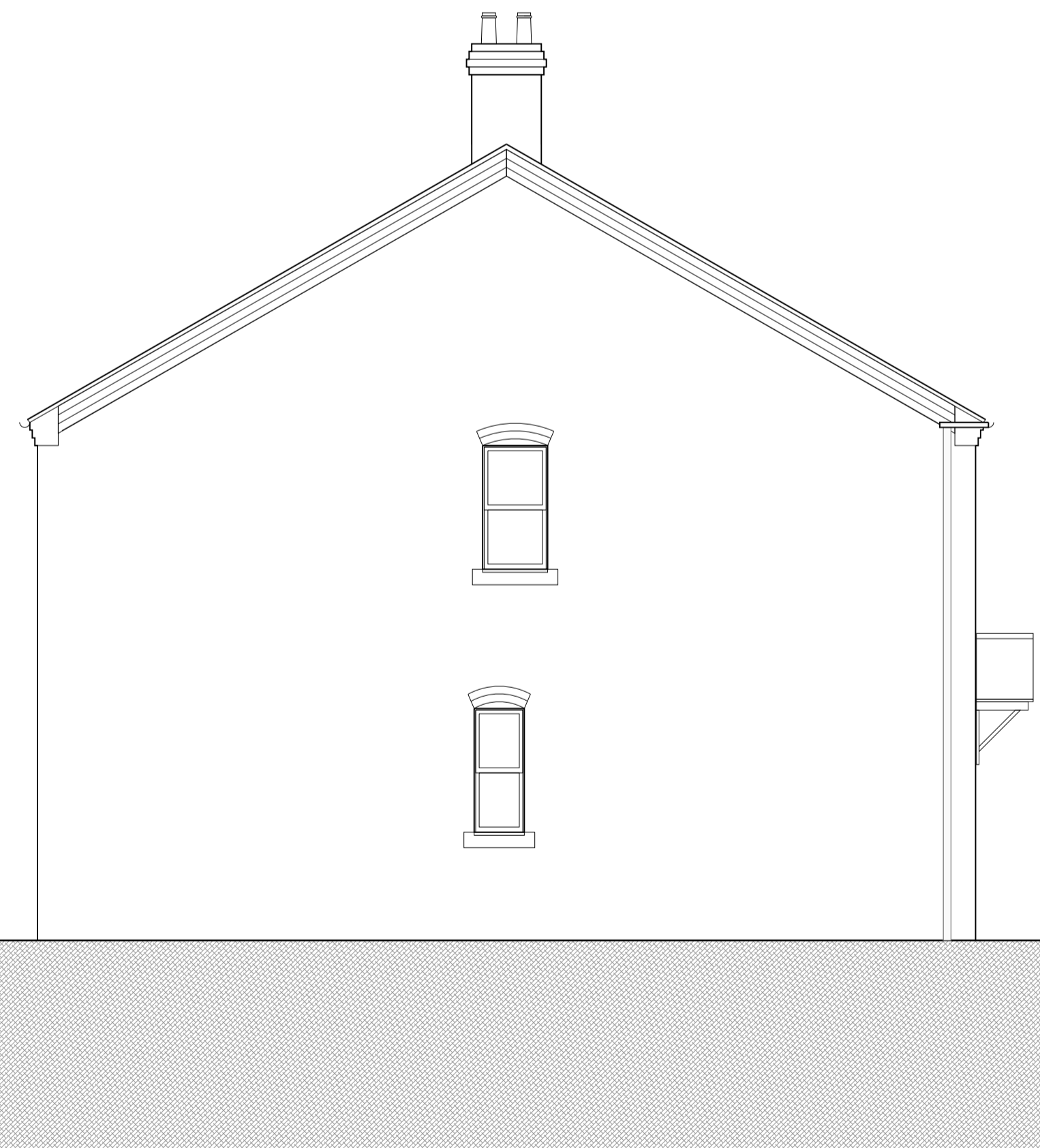
B Side 1 Elevation



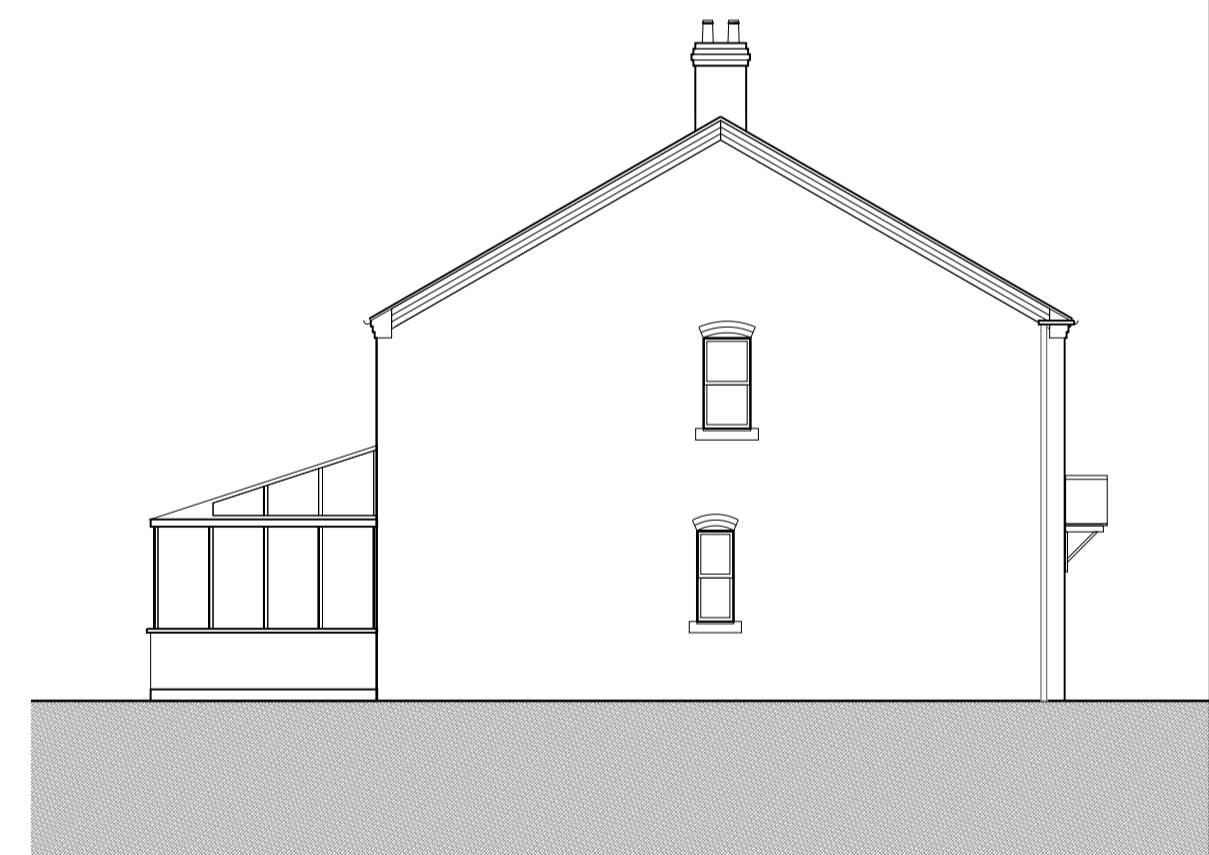
C Rear Elevation



C Rear Elevation



D Side 2 Elevation



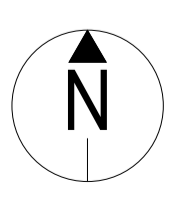
D Side 2 Elevation

ELEVATIONS WITH CONSERVATORY SHOWN

rev	details	by	date
P00	FIRST ISSUE	MC	01.12.2014
P01	COMMENTS FROM MEETING ON 01.12.14 INCORPORATED	MC	05.12.2014
P02	ISSUED FOR PLANNING	MC	19.12.2014
P03	RE ISSUED FOR PLANNING WITH COMMENTS INCORPORATED	MC	06.01.2015

rev	details	by	date

Notes
1. Do not scale from drawing, use figured dimensions only.
2. All dimensions to be checked onsite.
3. This drawing to be read in conjunction with all other Gillespies drawings and specifications.



Engineers	Project title UTTOXETER-PENNYCROFT
Quantity surveyors	Drawing title HOUSE TYPE 5 ELEVATIONS
Other consultants	

Drawing number M5242-2214	Revision P03
Drawing Status PLANNING	Drawn MC
Date 15.10.2014	Checked MS
Scale 1:50 @ A1	

East Staffordshire Borough Council
The Millsters
Wetmore Road
Burton upon Trent
DE14 3LS

GILLESPIES
Milton Chambers, 12 Heddon Court, Leeds LS1 4LJ
P: 0113 247 0550 F: 0113 247 0660 E: design.team@gillespies.co.uk

Ordnance Information shown is reproduced from Ordnance Survey material with the permission of Ordnance Survey on behalf of the Controller of Her Majesty's Stationary Office. © Crown Copyright. Unauthorised reproduction infringes Crown Copyright and may lead to prosecution or civil proceedings. License No. 1000 17362